

# **RTView Advanced Design Topics**

## **- Include Files**

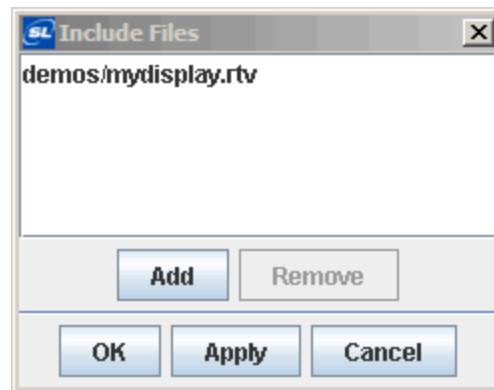
## Include Files

- If several displays use a common set of elements (as in a banner), it is possible to include the contents of another display (.rtv) file within those displays. Common elements, such as a navigation bar, can be defined and maintained in a separate display (.rtv) file and then included in each display.
- Shared elements can include functions, variables and objects. These elements from an included display cannot be modified or removed in the current display, except for initial values.
- To edit the included elements, you must directly edit the included display file.
- The name of the include file will be shown in the respective dialogs.
- Make sure the background size of the include display matches that of the current display. Otherwise the placement of the included objects may be misaligned with the current objects.
- It is possible to include multiple display files. Likewise, include files can be nested, i.e., one include file can include other files.

## Include Files

How to add an include file:

1. Create a new .rtv file. Add functions, objects and variables as needed.
2. Save as <filename>.rtv
3. Bring in new display that will include the previously created display.
4. Tools>Include
5. Add display
6. Select Apply to see result.



## Exercises

### Ex 1: Create include files for functions and variables

1. In the Builder, File->Open class\_tables.rtv.  
File->Save As jms\_current\_include.rtv
2. File->Open jms\_current\_include.rtv. Remove all tables from file and save.  
This file should only contain functions and variables.
3. File->Open class\_tables.rtv. Remove all functions and variables from file.  
Tools->Include Files. From the “Include File” dialog, Add: jms\_current\_include.rtv  
File->Save
4. File->Open class\_trend.rtv. Repeat removal of functions, variables. Include  
jms\_current\_include.rtv . Save file.
5. Test with Builder Preview. The behavior should be the same as before the include file was introduced.