

Elements of Dashboard Design - Panel Layouts

Dashboard Design – Multi Panel Displays

RTView Displays can be arranged in different multi-panel configurations

- Examples are found in %RTV_HOME%\demos\multipanels
- In this directory there are several PANELS*.ini files which illustrate different possible arrangements of Multiple Display Panels.

PANELS_BORDER.ini - border layout

PANELS_GRID.ini - grid layout

PANELS_TABS.ini - tabbed layout

PANELS_TREE.ini - nav tree layout

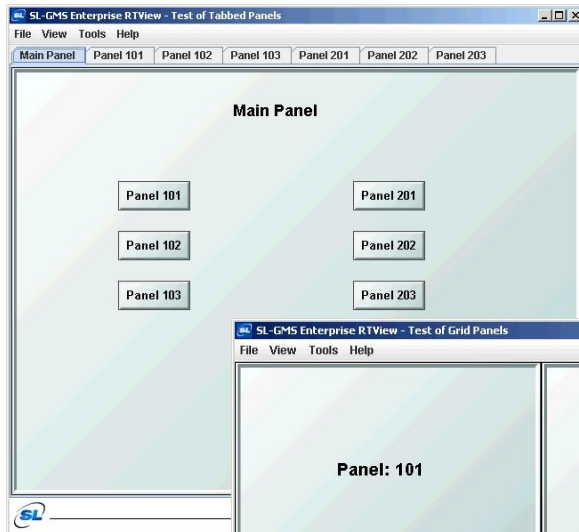
PANELS_CARD.ini - card layout

- To run:

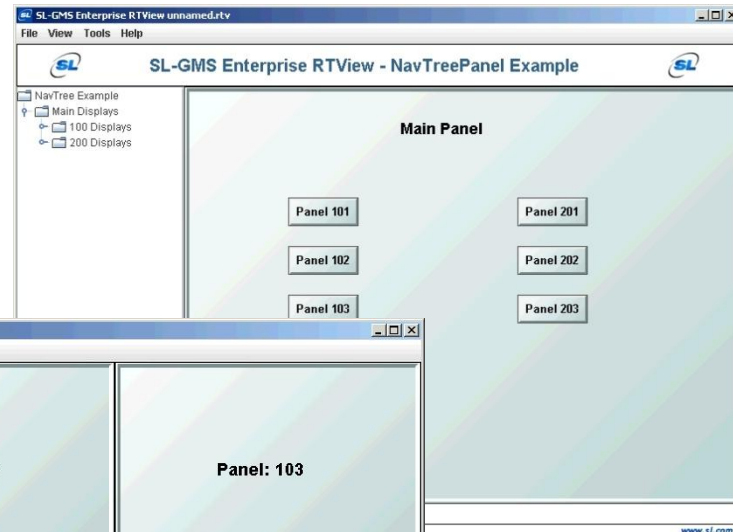
```
run_viewer -panelconfig:PANELS_GRID.ini
```

Dashboard Design – Multi Panel Displays

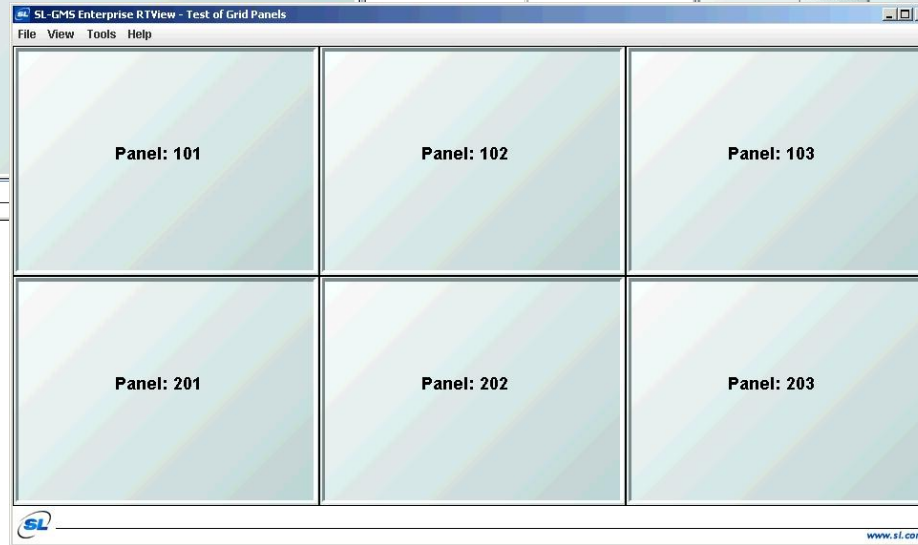
Tab Layout



Tree Layout

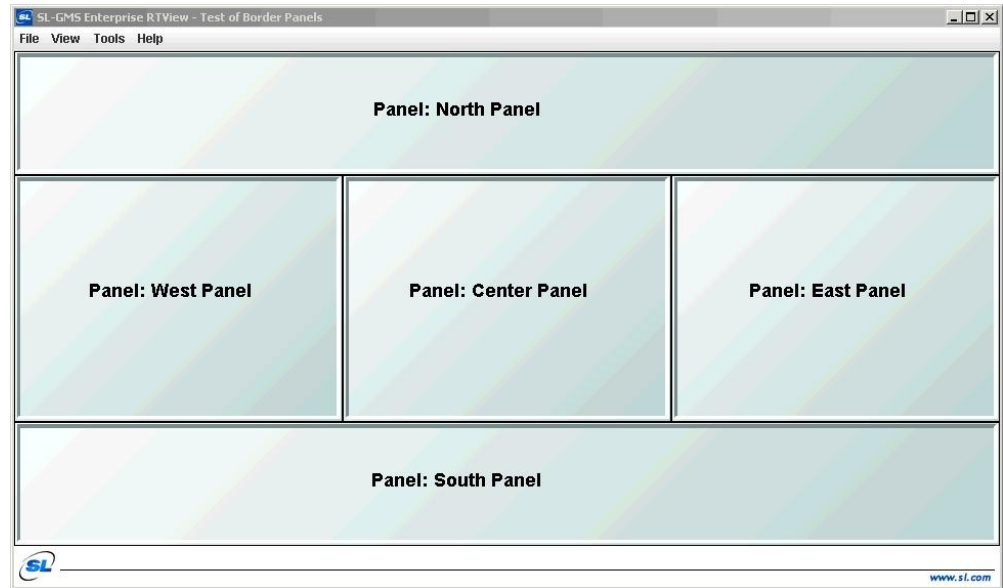
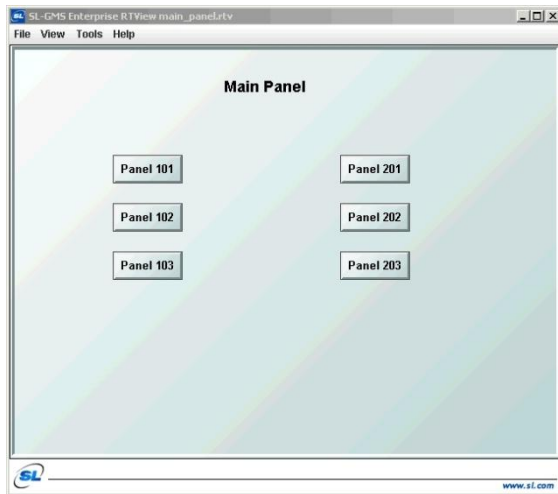


Grid Layout



Dashboard Design – Multi Panel Displays

Card Layout



Border Layout

Dashboard Design – Multi Panel Example

- RTView reads **PANELS.ini** file (by default) to populate panels with specified displays.
- PANELS.ini is specified in XML format:
- The following is an example of **PANELS.ini** (Tree Layout)

```
<?xml version="1.0" ?>
```

```
<panels xmlns="www.sl.com" version="1.0">
```

```
<rtvLayout title="Tree Panel">
```

```
    <rtvDisplayPanel region="north" name="title_panel" display="title_panel"/>
```

```
    <rtvTreePanel region="west" width="192" height="480" navdata="navtree.xml"/>
```

```
    <rtvDisplayPanel region="center" name="main" display="main_panel"/>
```

```
</rtvLayout>
```

```
</panels>
```

Dashboard Design – Multi Panel Example

The following is an example of **navtree.xml** (Tree Layout)

```
<?xml version="1.0" ?>
<navtree xmlns="www.sl.com" version="1.0">
<node label="Main Displays" display="main_panel">
  <node label="100 Displays">
    <node label="Panel 101" display="med_panel" subs="$title:101"/>
    <node label="Panel 102" display="med_panel" subs="$title:102"/>
    <node label="Panel 103" display="med_panel" subs="$title:103"/>
  </node>
  <node label="200 Displays">
    <node label="Panel 201" display="med_panel" subs="$title:201"/>
    <node label="Panel 202" display="med_panel" subs="$title:202"/>
    <node label="Panel 203" display="med_panel" subs="$title:203"/>
  </node>
</node>
</navtree>
```

Exercise

Ex 1: Create an Accordion layout

1. Copy RTV_HOME/demos/multipanels/PANELS_ACCORDION.ini and navtree2.xml into your working directory.
2. Rename PANELS_ACCORDION.ini to PANELS.ini
3. Use notepad to modify PANELS.ini.
Set *display="main_panel"* to *display="class_tables"*.
4. Edit navtree2.xml

```
<node label="Exercises">  
  <node label="Panel 101" display="class_tables" />  
  <node label="Panel 102" display="class_trend" />  
</node>
```

5. Invoke viewer by typing
run_viewer.bat